

LANSLEY



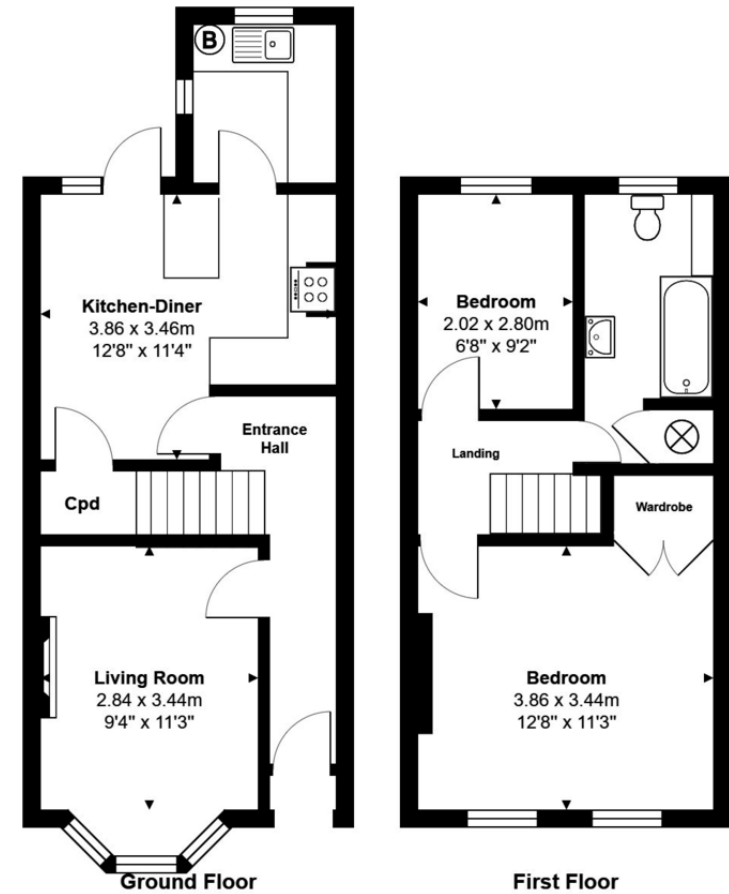
EPC: TBC

- Two Bedrooms
- Separate First Floor Bathroom
- Open Plan Kitchen-Diner
- No Onward Chain

172 Beecham Road, Reading, RG30 2RE

£275,000

This very well presented bay fronted Victorian end of terrace home is conveniently situated in a peaceful location close to local amenities and frequent bus service into central Reading. The property has a unique layout with accommodation comprising entrance hall, bay fronted living room, open plan kitchen- diner with access to the rear garden, two first floor bedrooms and separately approached first floor bathroom. This property has the added advantage of gas central heating, double glazing and no onward chain complications.



Total Area: 67.0 m² ... 721 ft²

All measurements are approximate and for display purposes only

111 Oxford Road, Reading,
Berkshire, RG1 7UH

www.ahlansley.co.uk
01189 391234
info@ahlansley.co.uk

Agents Note: Whilst every care has been taken to prepare these sales particulars, they are for guidance purposes only. All measurements are approximate and for general guidance purposes only and whilst every care has been taken to ensure their accuracy, they should not be relied upon and potential buyers are advised to recheck the measurements