

# LANSLEY



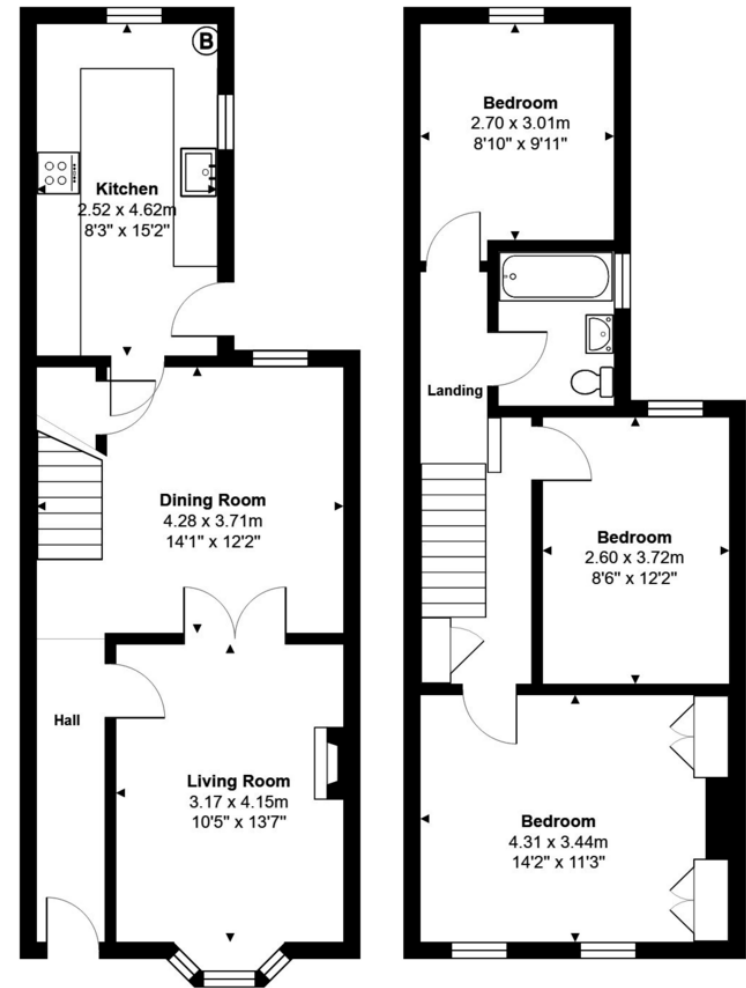
- Gas Central Heating
- Double Glazing
- Well Presented
- Residents Parking

37 Clifton Street, Reading, RG1 7YE

Asking Price Of £314,950

This spacious bay fronted Victorian terrace home is located within very easy access of Reading town centre and is presented in good condition throughout. For commuters Reading railway station is within walking distance and offers a fast service into London Paddington in less than 30 minutes. Accommodation comprises living room with open fire place and double doors opening through to the dining room, refitted kitchen with granite style work surfaces, separately approached refitted first floor bathroom and three separate bedrooms. Outside to the rear there is an enclosed courtyard style garden and to the front a small enclosed garden and residents parking.





111 Oxford Road, Reading,  
Berkshire, RG1 7UH

[www.ahlansley.co.uk](http://www.ahlansley.co.uk)  
01189 391234  
[info@ahlansley.co.uk](mailto:info@ahlansley.co.uk)

Agents Note: Whilst every care has been taken to prepare these sales particulars, they are for guidance purposes only. All measurements are approximate and for general guidance purposes only and whilst every care has been taken to ensure their accuracy, they should not be relied upon and potential buyers are advised to recheck the measurements.