

LANSLEY

EPC: D

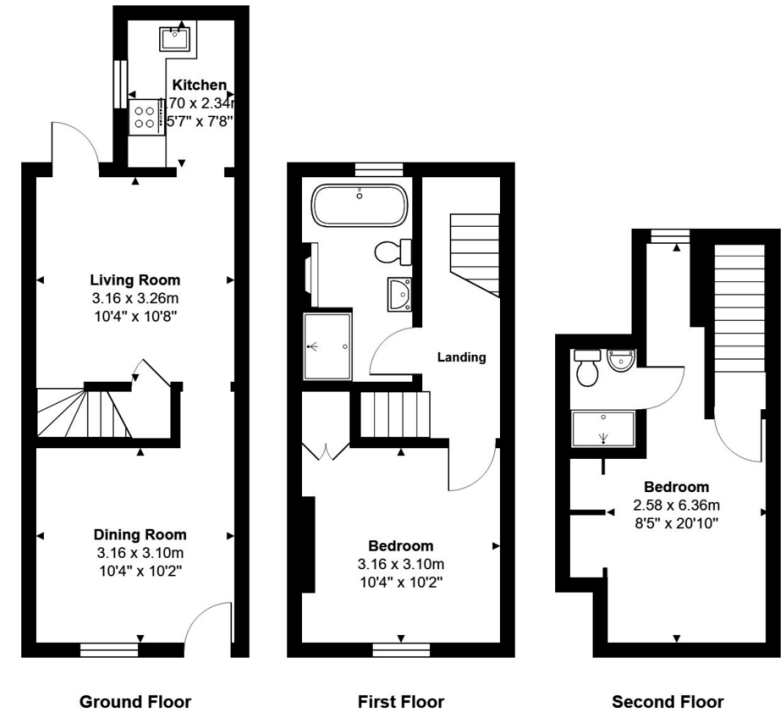


- Gas Central Heating
- Two Bedrooms
- South Facing Garden
- Double Shower

28 Francis Street, Reading, RG1 2QB

Asking Price Of £320,000

LANSLEY- This two bedroom mid terraced house is located within walking distance to Reading Town Centre, River Kennet, Oracle Shopping Centre and Reading mainline station making this property ideal for commuters. The property is well presented throughout with accommodation comprising dining room leading into the living room along with a modern refitted kitchen. Split over the first and second floors are two double bedrooms a fantastic refitted family bathroom with separate shower and free standing bath on the first floor and ensuite shower room on the second floor. The property benefits from a rear enclosed south facing garden with patio area.



Total Area: 68.3 m² ... 735 ft²
 All measurements are approximate and for display purposes only

111 Oxford Road, Reading,
 Berkshire, RG1 7UH

www.ahlansley.co.uk
 01189 391234
info@ahlansley.co.uk

Agents Note: Whilst every care has been taken to prepare these sales particulars, they are for guidance purposes only. All measurements are approximate and for general guidance purposes only and whilst every care has been taken to ensure their accuracy, they should not be relied upon and potential buyers are advised to recheck the measurements