

# LANSLEY



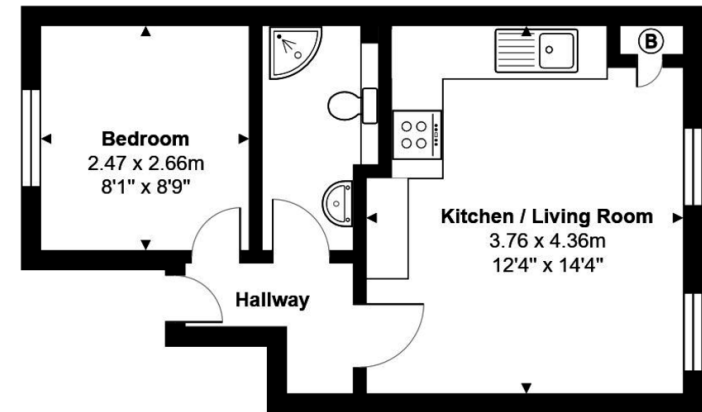
EPC: TBC

- Character Victorian Conversion
- Open Plan Living Area
- One Bedroom
- Close to Town Centre and Train Stations

## Flat 4, 22 George Street, Reading, RG1 7NT

Asking Price Of £130,000

LANSLEY - This top floor Victorian character conversion is ideally situated within walking distance of Reading town centre and Reading mainline train station and Reading West. The well-presented accommodation comprises an open plan kitchen/living room, a bedroom and a modern shower room. The property benefits from a communal garden, loft storage space and on-street parking. The property is of no onward chain.



Total Area: 29.4 m<sup>2</sup> ... 316 ft<sup>2</sup>  
All measurements are approximate and for display purposes only

111 Oxford Road, Reading,  
Berkshire, RG1 7UH

[www.ahlansley.co.uk](http://www.ahlansley.co.uk)  
01189 391234  
[info@ahlansley.co.uk](mailto:info@ahlansley.co.uk)

Agents Note: Whilst every care has been taken to prepare these sales particulars, they are for guidance purposes only. All measurements are approximate and for general guidance purposes only and whilst every care has been taken to ensure their accuracy, they should not be relied upon and potential buyers are advised to recheck the measurements