

# LANSLEY



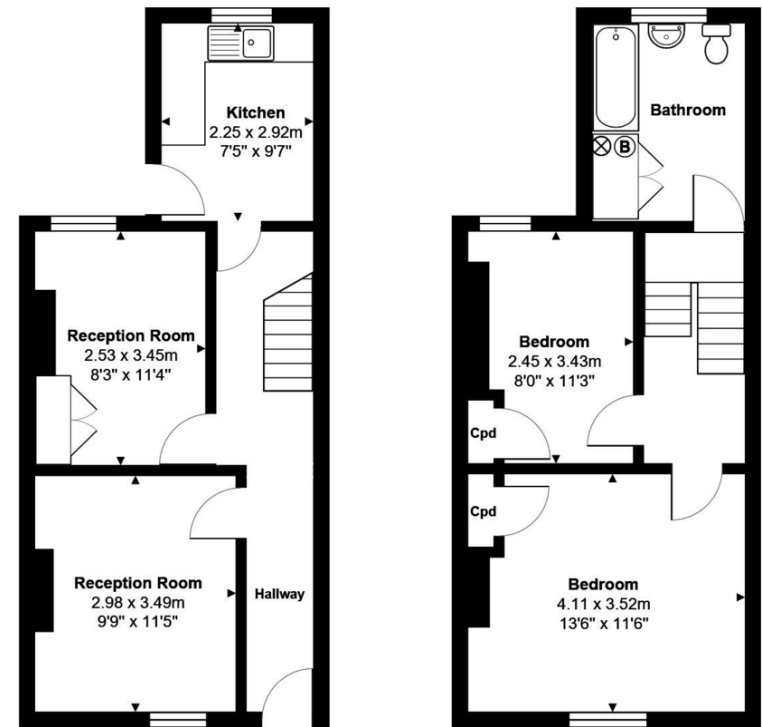
EPC: TBC

- Two Bedrooms
- Two Reception Rooms
- First Floor Bathroom
- Close to Town Centre

4 West Hill, Reading, RG1 2PN

Asking Price Of £287,500

LANSLEY - This two bedroom terrace ideally situated close to the Oracle Shopping Centre and Reading Mainline Station. The accommodation comprises two reception rooms and a kitchen, to the first floor are two bedrooms and a bathroom. The property boasts gas central heating, double glazing, rear enclosed garden and benefits from no onward chain.



Total Area: 72.4 m<sup>2</sup> ... 779 ft<sup>2</sup>  
 All measurements are approximate and for display purposes only



111 Oxford Road, Reading,  
 Berkshire, RG1 7UH

[www.ahlansley.co.uk](http://www.ahlansley.co.uk)  
 01189 391234  
[info@ahlansley.co.uk](mailto:info@ahlansley.co.uk)

Agents Note: Whilst every care has been taken to prepare these sales particulars, they are for guidance purposes only. All measurements are approximate and for general guidance purposes only and whilst every care has been taken to ensure their accuracy, they should not be relied upon and potential buyers are advised to recheck the measurements