

LANSLEY

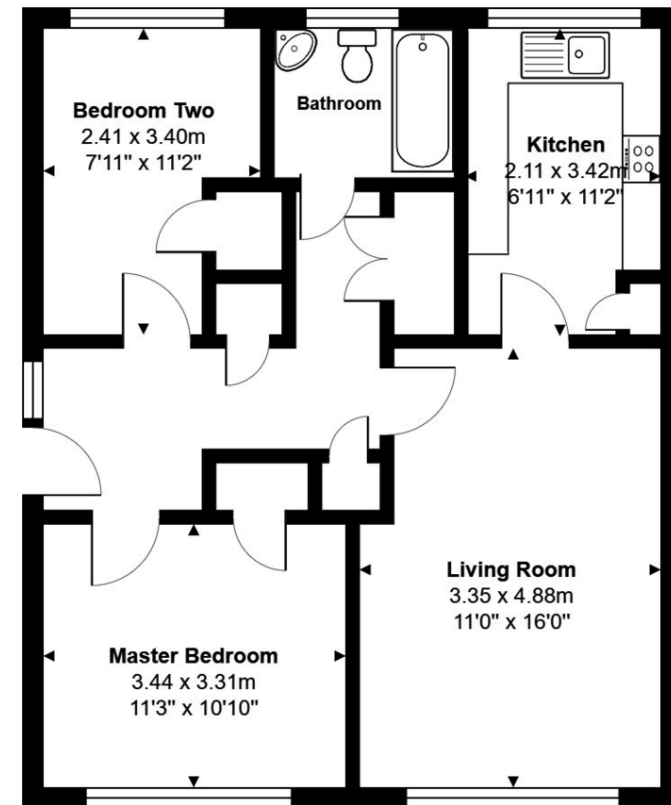


- Two Double Bedrooms
- Private South Facing Rear Garden
- Excellently Presented
- Ground Floor

83 Fulmead Road, Reading, RG30 1JX

£230,000

Lansley - This spacious ground floor maisonette is offered for sale, in our opinion, in excellent condition throughout and comprises of two double bedrooms, refitted family bathroom, lounge/diner and kitchen with integrated appliances including dishwasher and water softener. Externally the property benefits from front and south facing rear gardens and is conveniently located within easy access of regular bus routes in to Reading town centre and Reading West railway station.



111 Oxford Road, Reading,
Berkshire, RG1 7UH

www.ahlansley.co.uk
01189 391234
info@ahlansley.co.uk

Agents Note: Whilst every care has been taken to prepare these sales particulars, they are for guidance purposes only. All measurements are approximate and for general guidance purposes only and whilst every care has been taken to ensure their accuracy, they should not be relied upon and potential buyers are advised to recheck the measurements