

LANSLEY



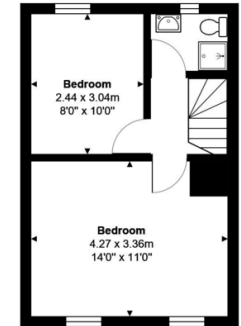
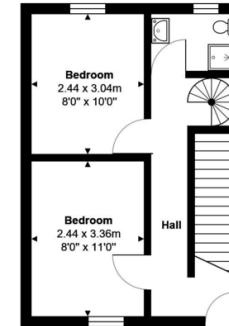
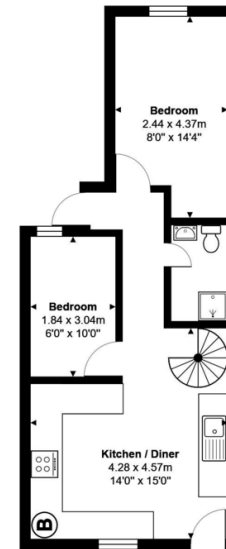
EPC: C

- Six Bedrooms
- Close to Reading Town Centre
- Gas Central Heating
- Three Bathrooms

16 Mason Street, Reading, RG1 7PD

Asking Price Of £409,950

Lansley - This three storey Victorian terrace property is situated within walking distance to Reading West Train Station, local amenities and just 0.5 miles to Reading Mainline Station and town centre. The accommodation comprises spacious kitchen-diner and six bedrooms split between the three stories with a bathroom on each floor. The property benefits from an enclosed rear garden mainly laid to lawn, permit parking and no onward chain. This property would make an ideal investment.



Total Area: 97.3 m² ... 1047 ft²
All measurements are approximate and for display purposes only



111 Oxford Road, Reading,
Berkshire, RG1 7UH

www.ahlansley.co.uk
01189 391234
info@ahlansley.co.uk

Agents Note: Whilst every care has been taken to prepare these sales particulars, they are for guidance purposes only. All measurements are approximate and for general guidance purposes only and whilst every care has been taken to ensure their accuracy, they should not be relied upon and potential buyers are advised to recheck the measurements