

# LANSLEY

EPC: C

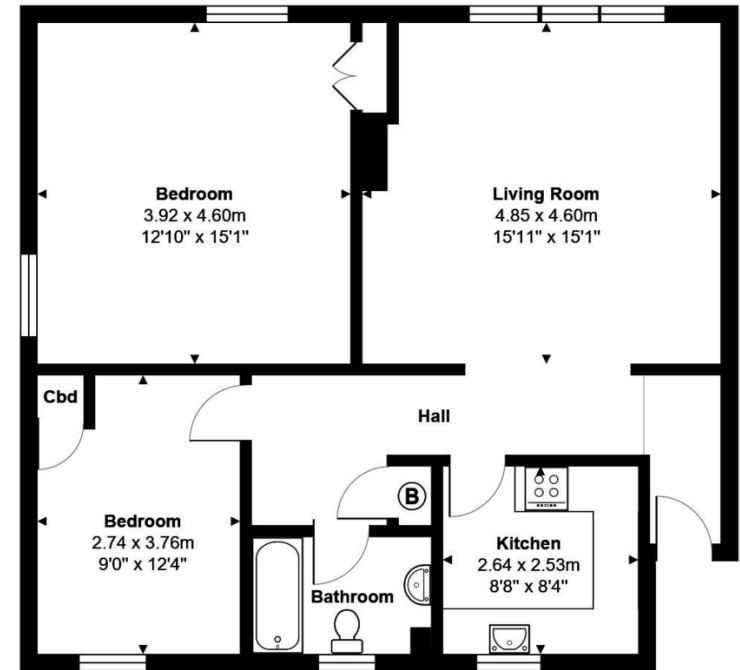


- Two Double Bedrooms
- Fully Refurbished
- No Onward Chain Complications
- Garage In Block

10 Valerie Court, Bath Road, Reading, RG1 6HP

Asking Price Of £240,000

Lansley - Offered to the market with no onward chain complications is this, in our opinion, immaculately presented two double bedroom first floor apartment. The property has been recently refurbished throughout and accommodation further comprises refitted kitchen with gas hob, three piece refitted bathroom and lounge/diner. Externally the property has the added benefit of a garage in a nearby block and is located close to local bus routes in to Reading town centre. The property would make an excellent first time or investment purchase and an internal viewing is highly recommended by the vendors sole selling agents.



Total Area: 77.1 m<sup>2</sup> ... 830 ft<sup>2</sup>

All measurements are approximate and for display purposes only

111 Oxford Road, Reading,  
Berkshire, RG1 7UH

[www.ahlansley.co.uk](http://www.ahlansley.co.uk)  
01189 391234  
[info@ahlansley.co.uk](mailto:info@ahlansley.co.uk)

Agents Note: Whilst every care has been taken to prepare these sales particulars, they are for guidance purposes only. All measurements are approximate and for general guidance purposes only and whilst every care has been taken to ensure their accuracy, they should not be relied upon and potential buyers are advised to recheck the measurements