

LANSLEY

EPC: TBC

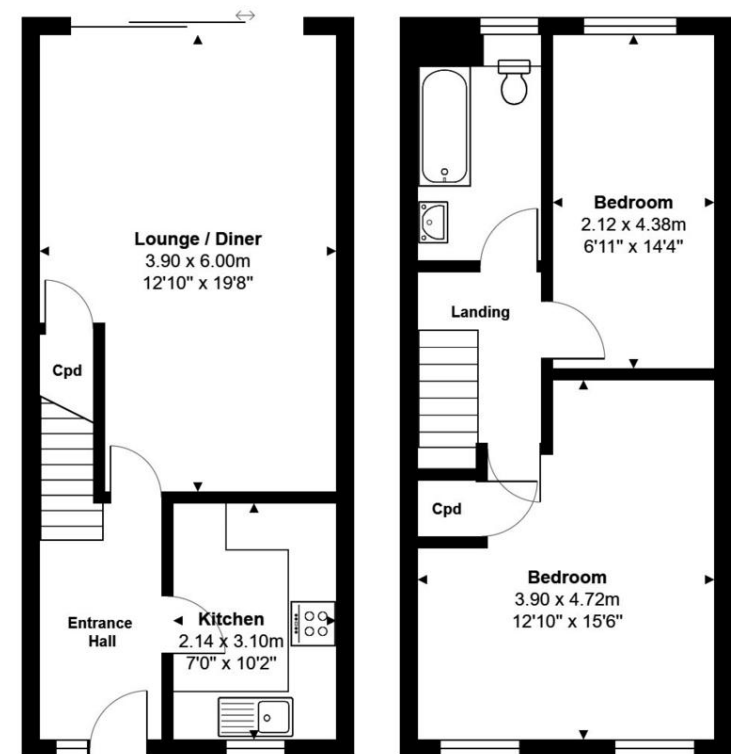


- Two Bedrooms
- Refitted Kitchen
- Enclosed Rear Garden
- Garage in Block

9 Aylsham Close, Tilehurst, Reading, RG30 4XG

Asking Price Of £285,000

Lansley - This two bedroom terrace is ideally situated 0.5 miles from the heart of Tilehurst Village the home to a variety of local amenities, multiple regular bus routes into Reading Town Centre and local schools. The accommodation comprises an entrance hall, refitted kitchen, 19' open living/diner, to the first floor two bedrooms and refitted bathroom. The property benefits from having a garage in the block, double glazing and enclosed rear garden.



Total Area: 72.2 m² ... 777 ft²

All measurements are approximate and for display purposes only

111 Oxford Road, Reading,
Berkshire, RG1 7UH

www.ahlansley.co.uk
01189 391234
info@ahlansley.co.uk

Agents Note: Whilst every care has been taken to prepare these sales particulars, they are for guidance purposes only. All measurements are approximate and for general guidance purposes only and whilst every care has been taken to ensure their accuracy, they should not be relied upon and potential buyers are advised to recheck the measurements