

# LANSLEY

EPC: TBC

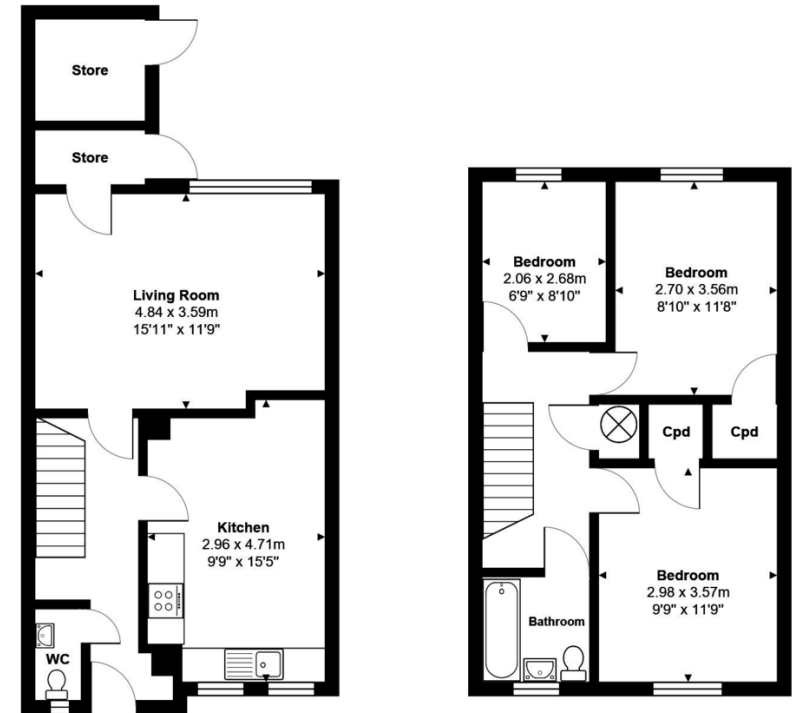


- No Onward Chain
- Short Walk to Heart of Caversham
- Three Bedrooms
- Gas Central Heating

127 Grove Road, Emmer Green, Reading, RG4 8LW

Guide Price £315,000

LANSLEY - This three bedroom terrace situated in the heart of Caversham. The property is a short walk from a wide range of local amenities, regular bus routes into Reading town centre and is in the catchment of Highdown Secondary School. The accommodation comprises a cloakroom, 15' kitchen, 15' family living area, to the first floor are three bedrooms and family bathroom. To the rear is an enclosed private garden and benefits from no onward chain complications. The property requires cosmetic improvements.



Total Area: 86.7 m<sup>2</sup> ... 933 ft<sup>2</sup>

All measurements are approximate and for display purposes only

111 Oxford Road, Reading,  
Berkshire, RG1 7UH

[www.ahlansley.co.uk](http://www.ahlansley.co.uk)  
01189 391234  
[info@ahlansley.co.uk](mailto:info@ahlansley.co.uk)

Agents Note: Whilst every care has been taken to prepare these sales particulars, they are for guidance purposes only. All measurements are approximate and for general guidance purposes only and whilst every care has been taken to ensure their accuracy, they should not be relied upon and potential buyers are advised to recheck the measurements