

LANSLEY

EPC: TBC

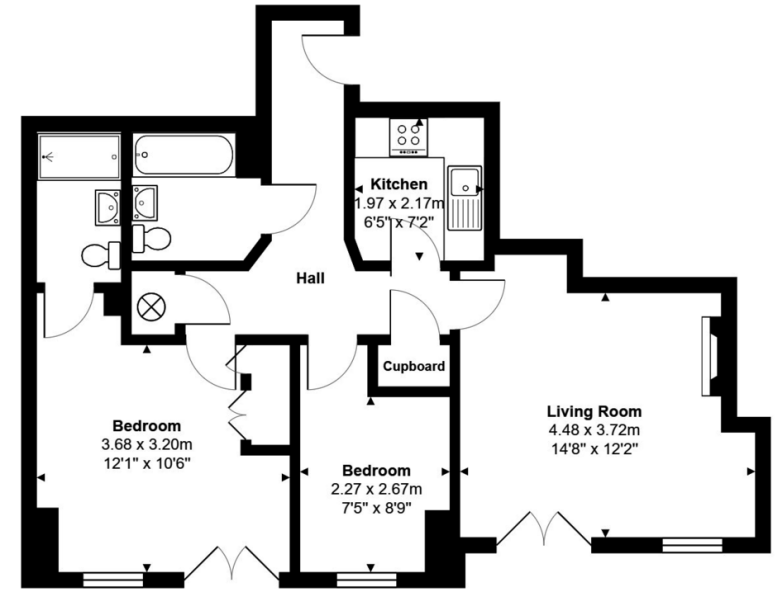


- Two Bedrooms
- Heart of Town Centre
- No Onward Chain
- Master with Ensuite

Flat 6 The Picture House, Cheapside, Reading, RG1 7AB

Asking Price Of £250,000

LANSLEY - This two bedroom apartment is ideally situated in the heart of Reading town centre and is a short walk of Reading railway station which offers a service into London Paddington within thirty minutes. The accommodation comprises a hallway, refitted kitchen with integrated appliances, living room with Juliette balcony, master bedroom with an en-suite shower room, fitted wardrobes and Juliette balcony, bedroom two and family bathroom. The property benefits from loft access, secure video entry system, gas central heating and no chain complications.



Total Area: 62.5 m² ... 673 ft²
All measurements are approximate and for display purposes only



111 Oxford Road, Reading,
Berkshire, RG1 7UH

www.ahlansley.co.uk
01189 391234
info@ahlansley.co.uk

Agents Note: Whilst every care has been taken to prepare these sales particulars, they are for guidance purposes only. All measurements are approximate and for general guidance purposes only and whilst every care has been taken to ensure their accuracy, they should not be relied upon and potential buyers are advised to recheck the measurements